



## **KIP Windows Printer Driver**

---

### CLIENT – SERVER ARCHITECTURE

---

### **Installation Instructions**

---

**KIP Windows Printer driver** continues to blend the ability to spool directly to the printer with the flexibility and power associated with the KIP Monitor Paths.

- I. Sharable from the Server or the KIP Controller.
- II. Compatible with WinNT, Win2000, Windows XP. Sharable to Win95, Win98 and Win ME.
- III. Tracks User, Job Number and Description fields
- IV. Ability to spool data directly to the KIP Controller
- V. Designed to completely integrate with existing KIP devices.
- VI. Paper type, header and Fold features.

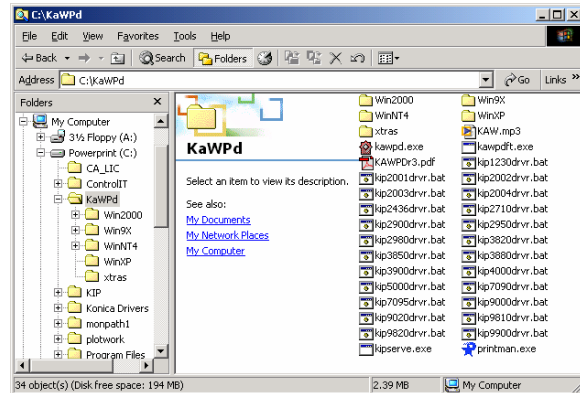
**This document is divided into three sections:**

- a) Driver installation – 1<sup>st</sup> time install at the Server and installing additional Printers.
- b) Driver installation – 1<sup>st</sup> time install at the KIP Controller
- c) Driver installation – 1<sup>st</sup> time install at a Workstation

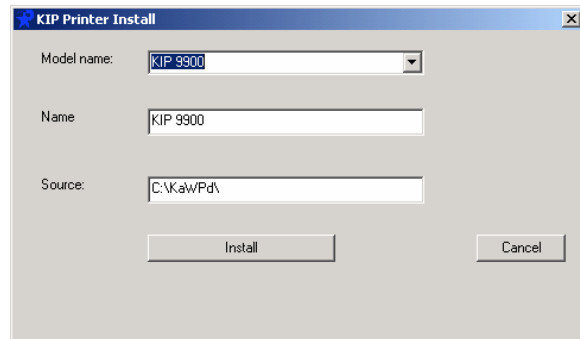
## Driver installation procedure

### 1<sup>st</sup> time Server Installation

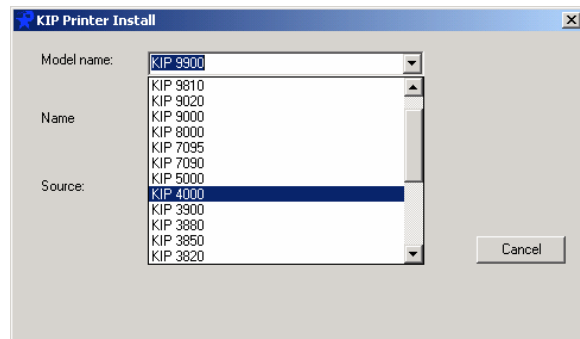
- 1) Copy the contents of the KAWPD folder to the hard drive of the Server (it is important to copy the contents to the Server since Windows 95/98/ME Clients would require files to be copied over to their workstations from the Server install.



- 2) Execute 'Printman.exe' file. It is located in the 'KAWPD' folder.

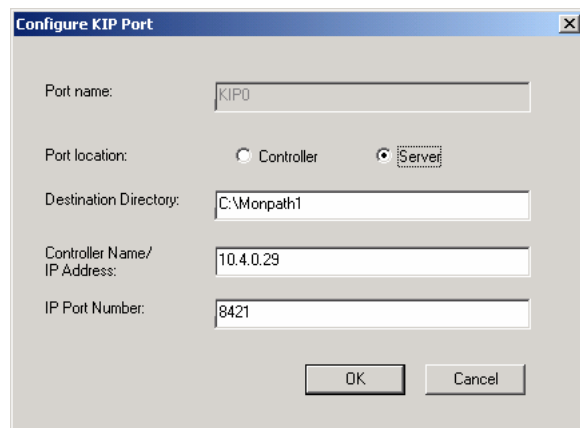


- 3) Select your "Printer" from the list of printers available.

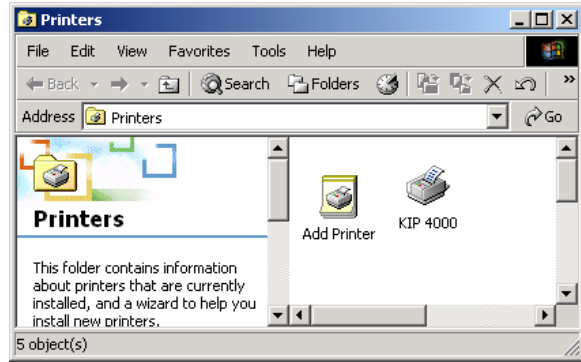


- 4) Click on 'Install' after making your printer selection. The driver will install the appropriate files associated with the printer that the users choose.

- 5) This is the main screen where we choose between 'Controller' and the 'Server'. Since the installation of the driver is being done at the 'Server', please ensure that the Port location is set to **Server** and **Controller Name/IP address of the KIP controller is correct** (to be keyed in by the Administrator). 'Port name' as 'KIP0' should not be changed at the Server.



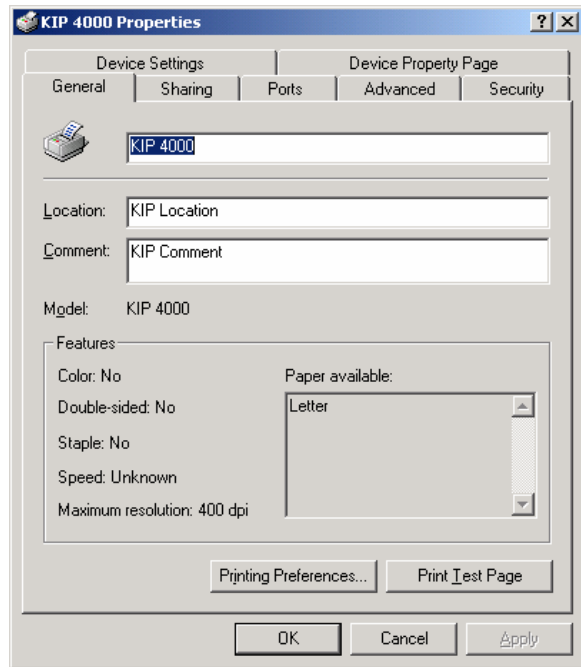
- 6) The required Printer can now be seen under the Printers Control panel.



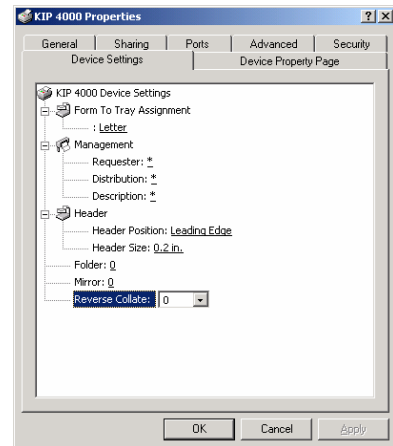
- 7) Next, right click on the new printer, and go to it's properties.

KIP Printer driver properties

- 8) Click on the 'Sharing' tab. Next, click on 'Shared as' and share the Printer driver from the Controller for clients to connect and print using the Controller to the KIP Pinter.



- 9) Continue to make your selection for 'Default Settings' for paper size, accounting and management functions, header information, folding, mirror and reverse collation.



This completes the installation of the driver at the Server.

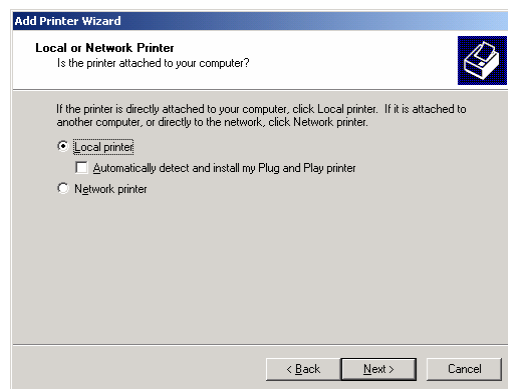
## Installing additional Printer drivers on a Server -- WINDOWS 2000 Example

The screenshots presented are particular to Windows 2000. The screenshots from WinNT are similar.

- 1) Go to START, SETTINGS, PRINTERS
- 2) Double-click on ADD A PRINTER. Click NEXT.

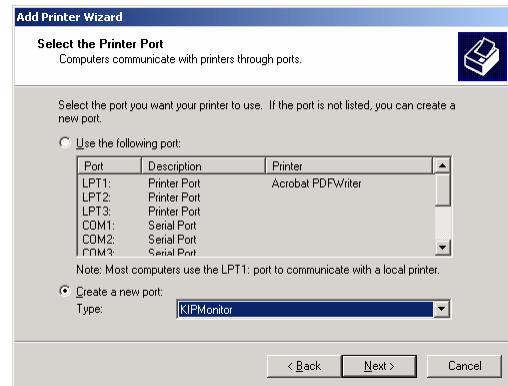


- 3) In the next screen, choose how the printer is installed. Choose LOCAL PRINTER. The KIP Printer is not a Plug-and-Play device, so do not check the box to Automatically detect. Click 'NEXT' after selecting LOCAL PRINTER.

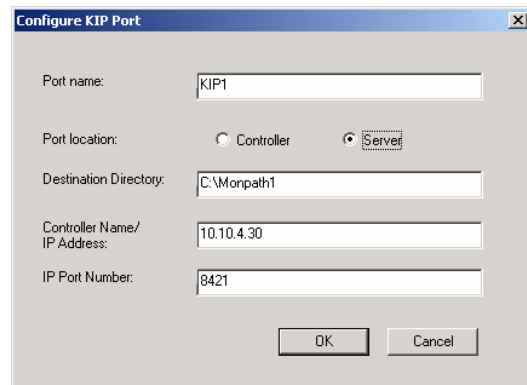


- 4) The following screen will open:

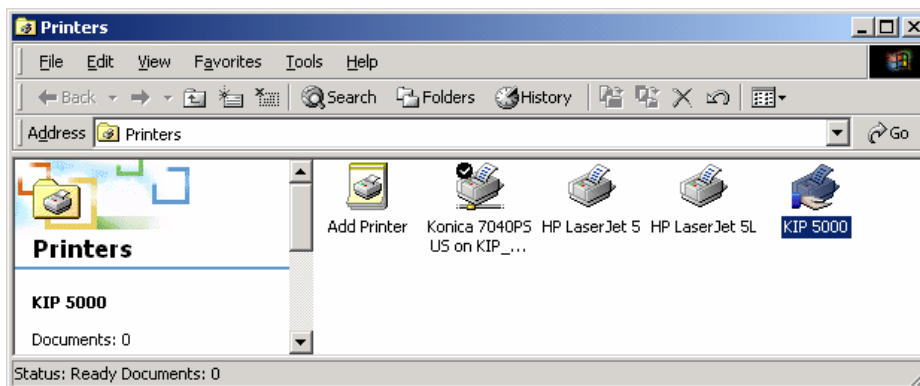
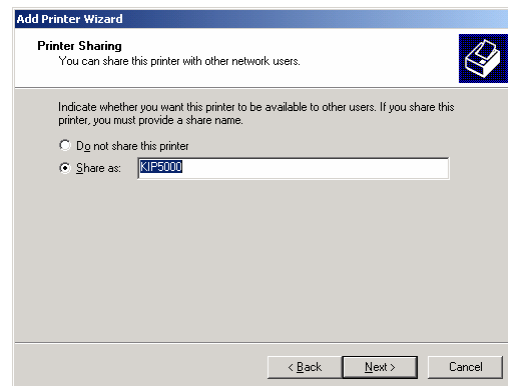
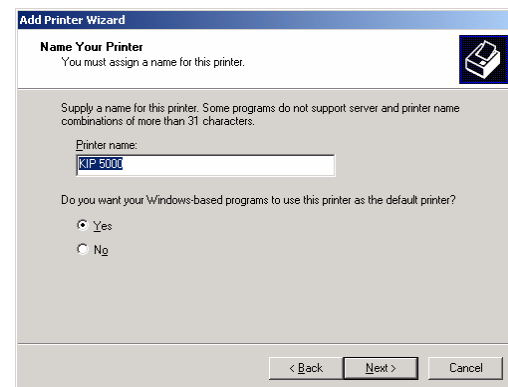
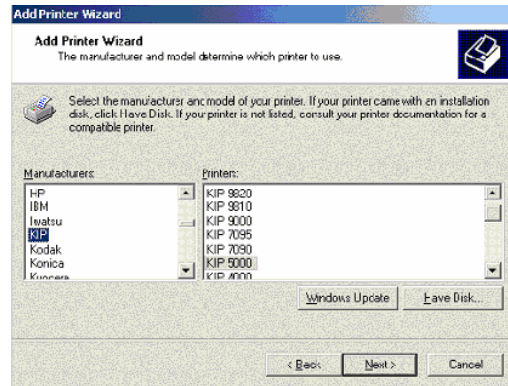
- 5) Select CREATE A NEW PORT. Under 'Type', choose KIP MONITOR. Click NEXT. The following screen will open:



This port may be given the name 'KIP1'. Subsequent Printers will be labeled 'KIP2', 'KIP3' and so on. Since the installation of the second driver is being done at the 'Server', please ensure that the Port location is set to Server and **Controller Name / IP address of the controller is correct** (to be keyed in by the Administrator). Click OK. It may take a few seconds before the next screen becomes available. This is normal.



- 6) Next, choose 'KIP' as the manufacturer, and select the Printer Model. If KIP is not in the manufacturer's list, choose HAVE DISK, then browse to c:\KAWPD folder and then the folder of the Operating System. Choose *oemsetup.inf* to load KIP as a manufacturer.
- 7) Click Next to the following screen. Assign the printer name.
- 8) Since this printer has been installed as a LOCAL PRINTER, the 'Admin' may choose to share it on the network. Check 'Share as' box, and click NEXT.
- 9) The test page prompt will open. Click NO and proceed by clicking NEXT.
- 10) Click FINISH for the program to load the driver.
- 11) If prompted for the .gpd file or the .inf file, please browse to the location of the files in the KAWPD folder.
- 12) If prompted for a "Service Pack" CD while trying to install *unidrv4.dll*, please browse to *c:\kawpd\WIN2000\unidrv*
- 13) This will complete the installation of the Printer driver on the Computer. Under 'Control Panel', "printers", the newly created printer will be listed. This completes the installation of the Second printer driver at the Server.

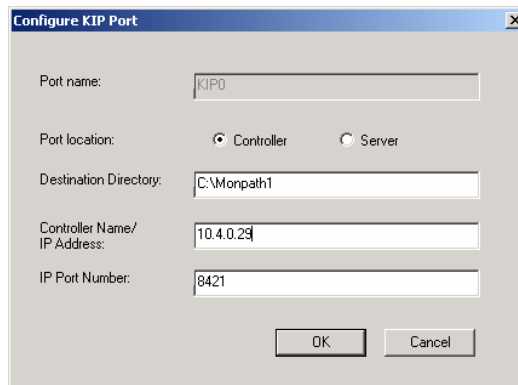


## 1<sup>st</sup> time Controller Installation

The Windows driver comes pre-installed on the KIP Controller. However, in case a new Controller is being built, please follow the procedure below.

Follow Steps 1 to 4 from the Server Installation as above.

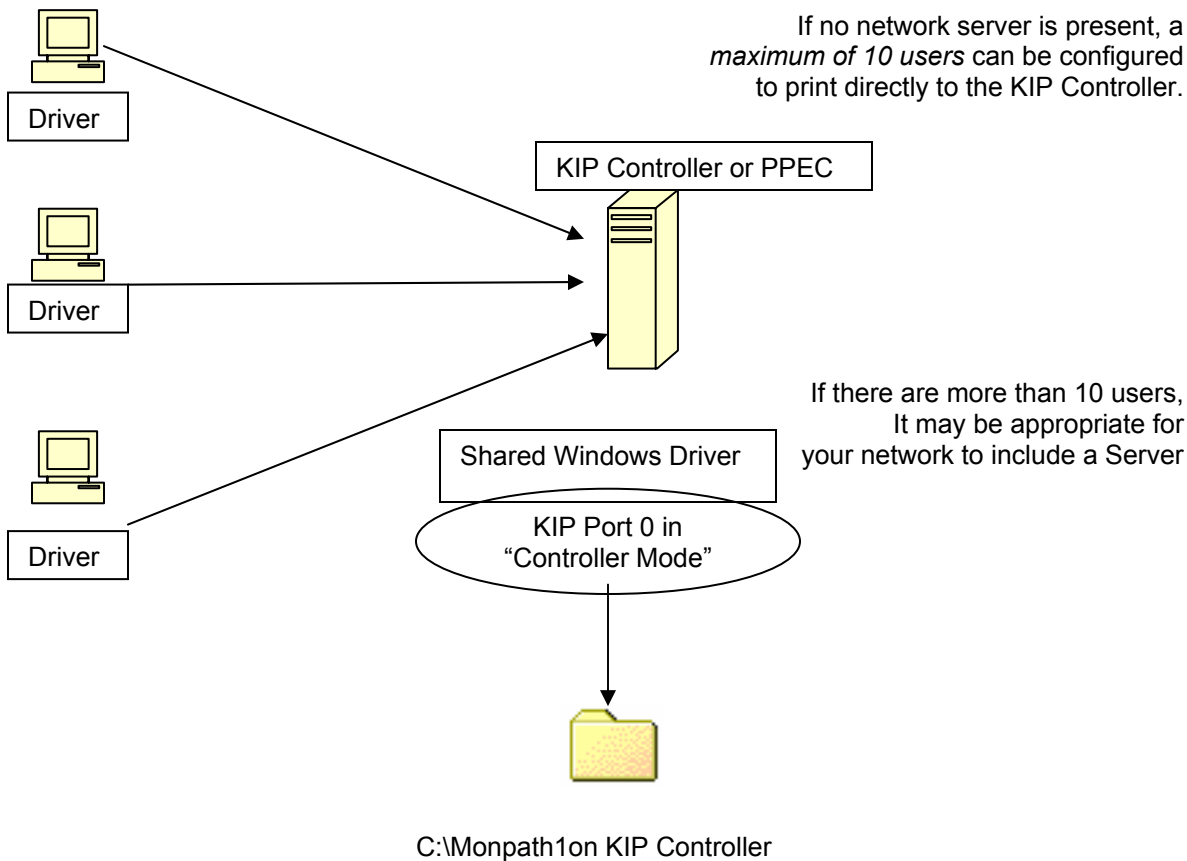
- 5) This is the main screen where we distinguish between 'Controller' and 'Server'. Since the installation of the driver is being done at the 'Controller', please ensure that the 'Port Location' is set to 'Controller' and Controller Name / IP address is correct. 'Port name' as 'KIP0' should not be changed at the Controller.



Follow Steps 6 to 9 from the Server Installation as above.

This completes the installation of the driver at the Controller.

### Correct Setup Method – KIP Controller



## 1<sup>st</sup> time install at the Workstation

- If connecting the Workstation to the Server, simply use the Shared printer driver installed at the Server.
- If connecting the Workstation to the Controller, simply use the Shared printer driver installed at the Controller.

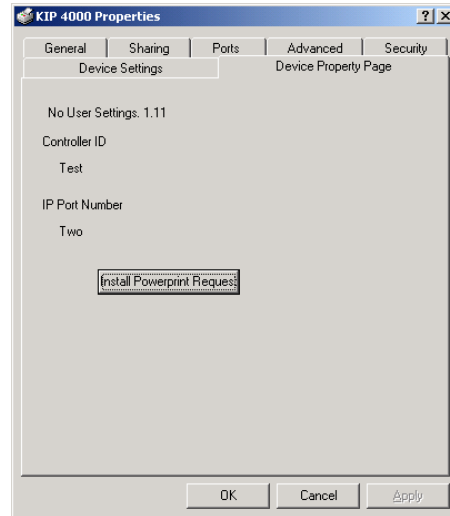
### Installing Powerprint Request at the Workstation

Upon completion of the installation, right click on Printer icon, Select Preferences / Properties, – then device Property page.

Clicking on 'Install Powerprint Request' will initiate the installation of the 'Requester' package on the Workstation.

Note: On Windows 9x/ME user will be required to key in the IP address or Computer Name of the Controller.

Reboot when Prompted.



As an example below, the Windows driver has been installed and shared at the Server. Client Workstations can now print from Windows applications.

### Correct Setup Methods – Using A Network Server

